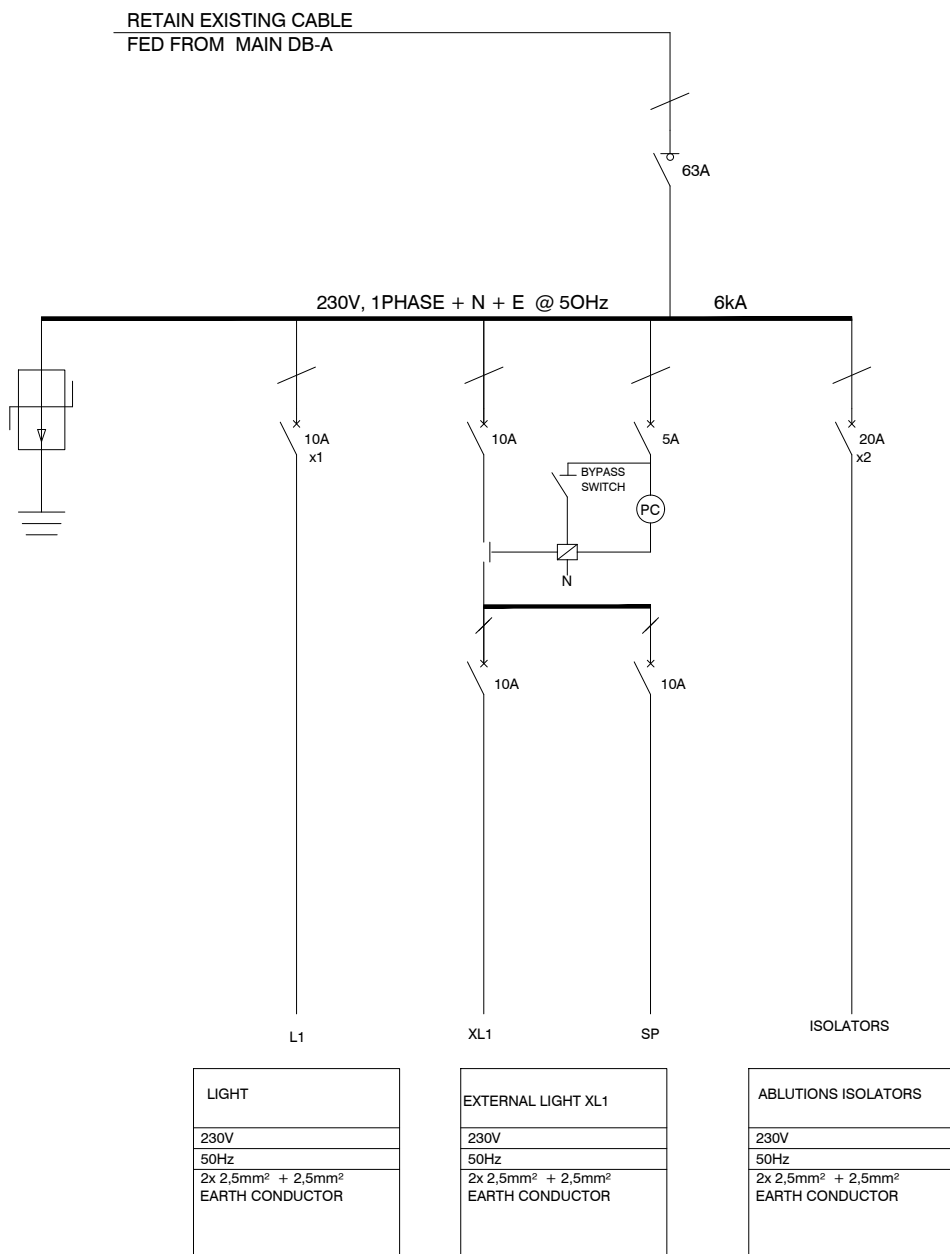


ADDITIONAL NOTES	DISTRIBUTION BOARD INFORMATION
<div>1. THIS DB SHALL COMPLY WITH SANS 1973/61439 AND SHALL BE DESIGNED AND MANUFACTURED BY A SPECIALIST SWITCHBOARD MANUFACTURER.</div> <div>2. ALL EQUIPMENT SHALL COMPLY TO THE RELEVANT SANS STANDARDS.</div> <div>3. CASCADING CIRCUIT BREAKERS MUST USED.</div> <div>4. PROVIDE 20% SPARE SPACE.</div> <div>5. MATERIAL SHALL BE 1,6mm WHITE MILD STEEL WITH POWDER COATED EPOXY.</div> <div>6. NEUTRAL AND EARTH BAR MUST BE EQUAL TO PHASE BAR.</div>	<div>NAME OF DB : DB-D</div> <div>LOCATION : GUARD HOUSE</div> <div>MOUNTING : SURFACE MOUNTED</div> <div>IP CLASS : 54</div> <div>CABLE ENTRY : TOP FEEDERS</div> <div>DOOR REQUIRED : YES</div>

DB-D



ADDITIONAL NOTES	DISTRIBUTION BOARD INFORMATION
<div>1. THIS DB SHALL COMPLY WITH SANS 1973/61439 AND SHALL BE DESIGNED AND MANUFACTURED BY A SPECIALIST SWITCHBOARD MANUFACTURER.</div> <div>2. ALL EQUIPMENT SHALL COMPLY TO THE RELEVANT SANS STANDARDS.</div> <div>3. CASCADING CIRCUIT BREAKERS MUST USED.</div> <div>4. PROVIDE 20% SPARE SPACE.</div> <div>5. MATERIAL SHALL BE 1,6mm WHITE MILD STEEL WITH POWDER COATED EPOXY.</div> <div>6. NEUTRAL AND EARTH BAR MUST BE EQUAL TO PHASE BAR.</div>	<div>NAME OF DB : DB-E</div> <div>LOCATION : EXISTING ABLUTION</div> <div>MOUNTING : SURFACE MOUNTED</div> <div>IP CLASS : 54</div> <div>CABLE ENTRY : TOP FEEDERS</div> <div>DOOR REQUIRED : YES</div>

DB-E

LEGEND	
	1 POLE CIRCUIT BREAKER
	2 POLE ISOLATOR
	PHOTOCELL
	CABLE ON/ TO FIELD
L1/ P1	CIRCUIT NUMBERING
	SURGE ARRESTER

NOTES:

REFERENCE DRAWING		
NO.	DRAWING NUMBER	DESCRIPTION
1	3000	RETICULATION LAYOUT PLAN
2	3001	CLASSROOMS LIGHTING LAYOUT PLAN
3	3002	CLASSROOMS POWER LAYOUT PLAN
4	3003	DB-A AND DB-C SINGLE LINE DIAGRAM

REVISION			
NO.	DATE	REVISION	REV. BY
2	21/12/2022	ISSUED FOR TENDER	L. MKHIZE
1	27/09/2022	ISSUED FOR TENDER	L. MKHIZE
LODEMANN HOLDINGS SIGNATURES			
DESIGNED	N. MISOBI	SIGNATURE	DATE
DRAWN BY	L. MKHIZE		
ENGINEER	T. MBATHA		
PROJECT MANAGER	K. SHALI		

CLIENT DEPARTMENT SIGNATURES

FACILITY STAMP

FACILITY MANAGER

INFRASTRUCTURE MANAGER

GENERAL MANAGER

Checked by Professional Consultant  
Name

Signature Date

**SIGPRO**  
ENGINEERING AND PROJECT MANAGEMENT

DBSA  
Development Bank  
of Southern Africa

NORTHERN REGION

Project:  
**KZN DOE INFRASTRUCTURE DEVELOPMENT  
AND MAINTENANCE PROGRAMME**

Drawing Description:  
**MASHOBA PRIMARY SCHOOL  
DB-D AND DB-E  
SINGLE LINE DIAGRAM**

Drawn: SIGPRO Date: 29/07/2019

Scale/s:  
**N.T.S (A1)**

Consultant Drawing Number:  
**1013-022-3004 REV 2**

DBSA Drawing number  
**500200614**

Stamped by Plans Approval Committee